

52H-3E SERIES ENCLOSED MANUAL CLAMPS



CLAMPING



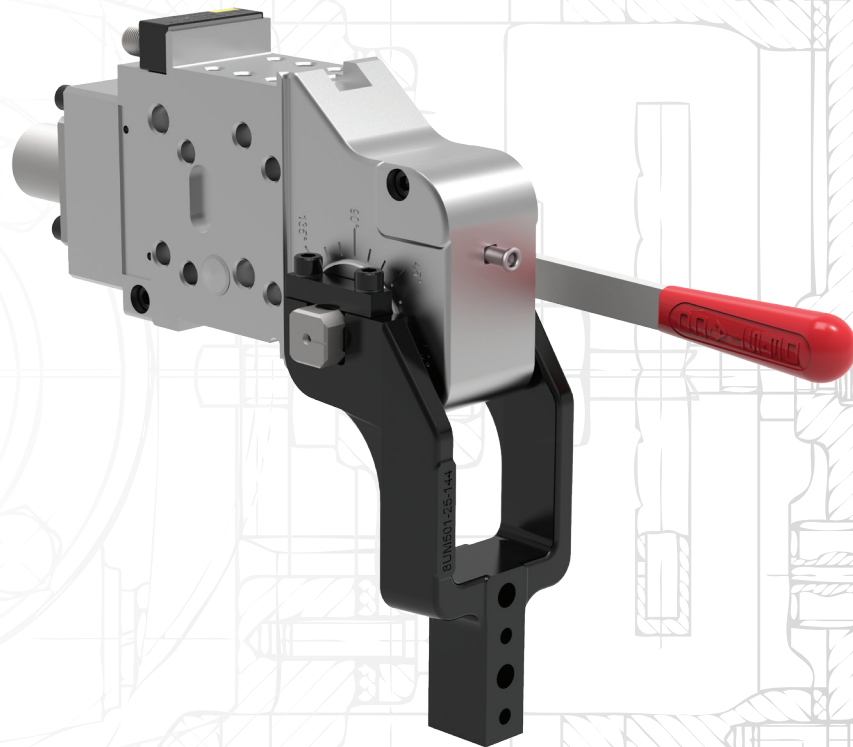
HOLD DOWN

ONE WORLD. ONE CLAMP. YOUR WAY.

DESTACO enclosed manual and power clamps are designed to meet the rigorous requirements of automotive and sheet metal processing applications, while lasting millions of cycles.

The 52H3E series manual clamps are built to withstand the harshest of manufacturing environments and designed to deliver superior clamping power with unparalleled flexibility.

When it comes to holding and positioning work perfectly in place, look no further than DESTACO's flexible and robust 52H-3E Series enclosed manual clamps to get the job done.



Product Highlights/Options

- Two sizes available - 50 and 63mm
- Integrated sensor package
- Compact, enclosed aluminum body
- Optional U-Arms and lateral arms available

Features



LOW/NO MAINTENANCE

- Easily adjust arm opening angle with one tool
- Hand lever is adjustable for better ergonomics



PERFORMANCE

- Infinite arm opening adjustment (up to 135°)
- Toggle locking mechanism ensure secure clamping



INTERCHANGEABLE

- Multiple mounting surfaces provide greater flexibility
- Conform to NAAMS and Euro mounting standards
- Same mounting pattern and surfaces as 82M3E power clamps

Markets



AUTOMOTIVE



INDUSTRIAL



AEROSTRUCTURE



CONSUMER GOODS

Applications



ASSEMBLY



WELDING



FIXTURE/TESTING

PC_52H-F_0916_US

52H-3E SERIES ENCLOSED MANUAL CLAMPS



The Most Flexible and Complete Family of Clamps



50mm

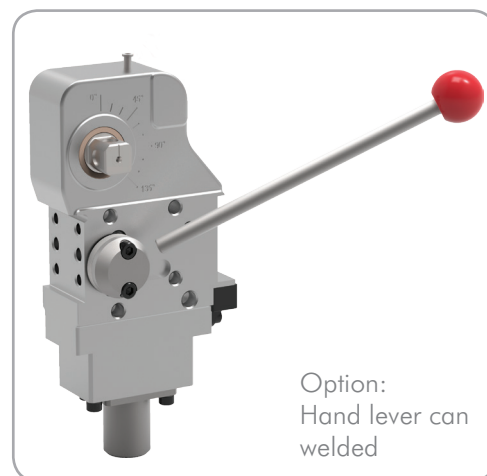
Max Holding Torque
1300 Nm

63mm

Max Holding Torque
1800 Nm



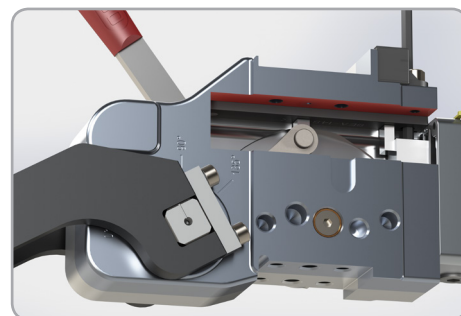
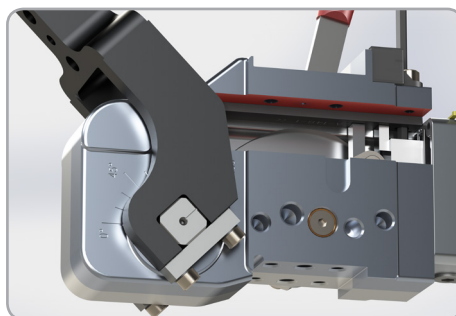
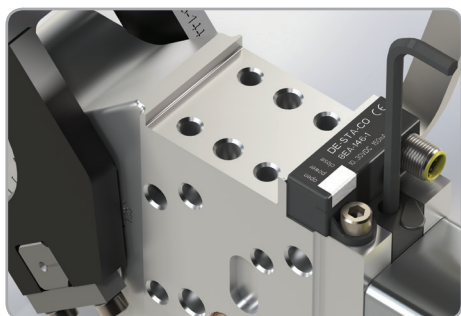
Hand lever
position can
be adjusted
20° up or down



Option:
Hand lever can
be welded

- Hand lever position is adjustable for improved ergonomics.
- Handle can be mounted on the left or right side

Adjusting the Arm Opening Angle



Easily adjust arm opening angle with an M5 Allen wrench.

- Move clamp arm to full open position.
- Using Allen wrench, release mechanism (leave Allen wrench in place).
- Move clamp arm to desired opening.
- Tighten to 20 Nm.

Dimensions and technical information are subject to change without notice.

PC_52H-F_0916_US

USA
Tel: +1-888-DESTACO

Customer Service:
northamerica@destaco.com

South America
Tel: +0800-124070

Customer Service:
southamerica@destaco.com

Europe
Tel: +49-6171-705-0

Customer Service:
europe@destaco.com

Asia
Tel: +66-2-326-0812

Customer Service:
asia@destaco.com

